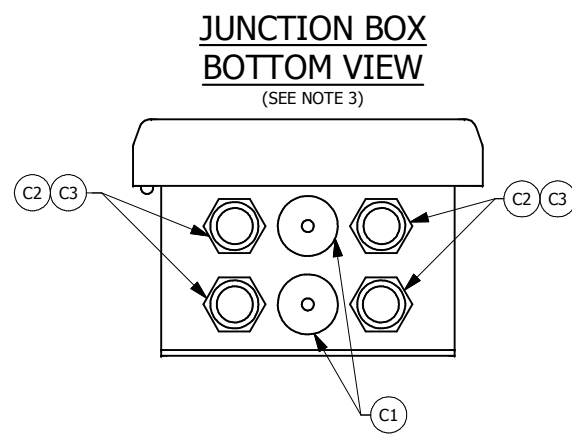
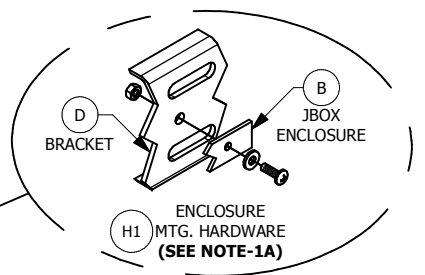
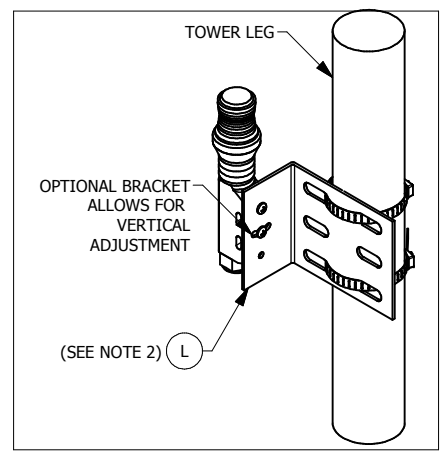
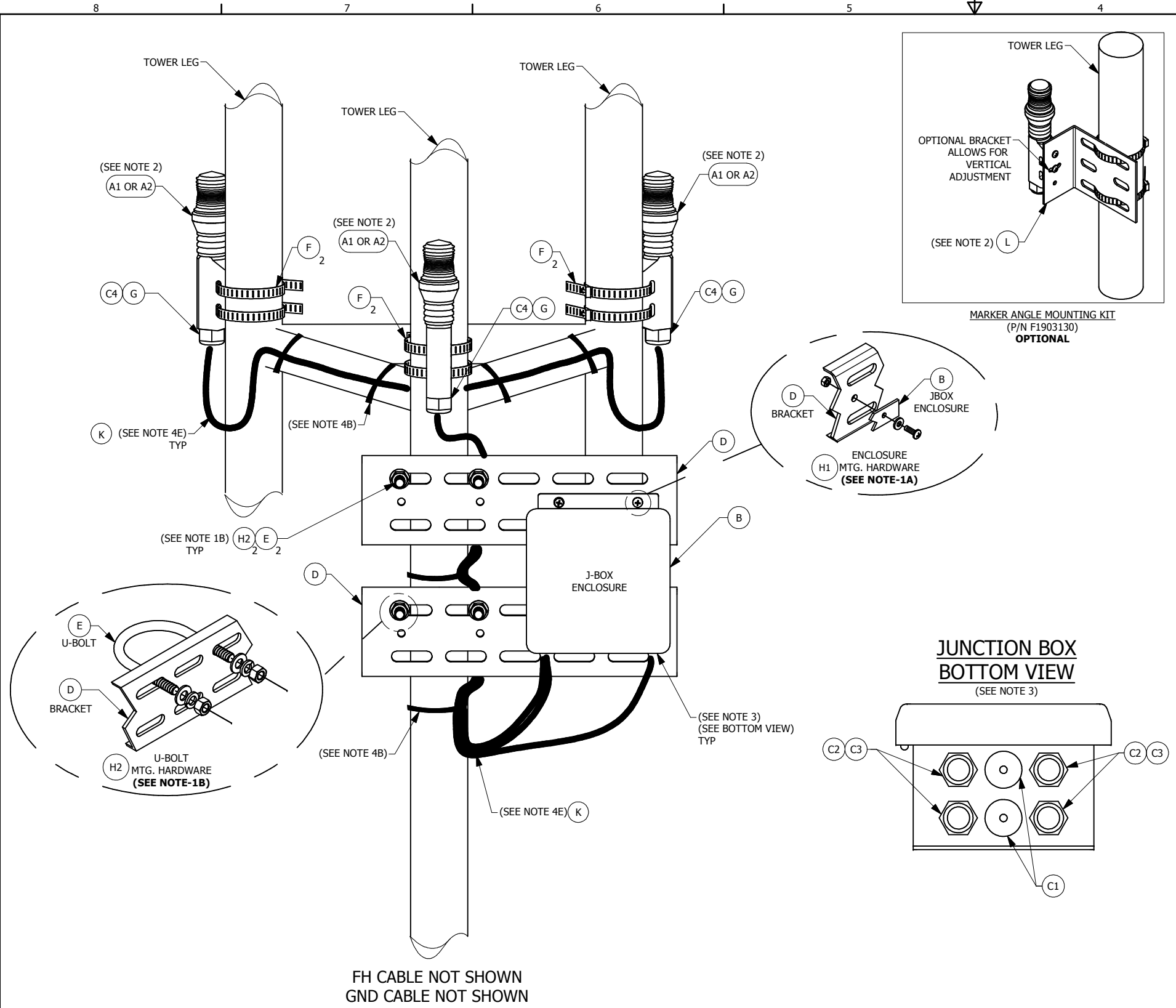


ZONE		REV	ECO	REVISIONS DESCRIPTION	REV BY	DATE	APPR BY
A		5814		PRODUCTION RELEASE	SPS	03/06/14	HK
B		5861		ADDED ITEM A2 MKR 370 AC IR	SPS	5/20/14	HK

ITEM	P/N	DESCRIPTION	COMPONENT QTY			UNITS	
			2 MKR	3 MKR	4 MKR		
A1	F1119001	MARKER L810 LED 2.7W MKR 370 AC	2	3	4	EA	
A2	F1119003	MARKER L810 LED 4.6W MKR 370 AC IR	2	3	4	EA	
B	F3136105	JUNCTION BOX ENCLOSURE (SEE NOTE 1A)	1	1	1	EA	
C1	F5902390	HOLE PLUG/CORD GRIP - 0.50"	3	2	1	EA	
C2	F5903170	CORD CONNECTOR 1/2" BLACK PLASTIC	3	4	5	EA	
C3	F5991690	LOCKNUT, 1/2" CONDUIT	3	4	5	EA	
C4	F4900156	CORD CONNECTOR 3/4" BLACK PLASTIC	2	3	4	EA	
D	F3990810	BRACKET, ADJUSTABLE MOUNTING	2	2	2	EA	
E	F5998351	U-BOLT - 0.5"-13 X 12" LONG (HDG)	2	2	2	EA	
F	F5990252	CLAMP ADJUSTABLE 2"-10"	4	6	8	EA	
G	F4902571	CONN WIRE NUT BLUE	6	9	12	EA	
H1	F5991775	MARKER BOX MOUNTING ASSEMBLY HARDWARE	2	2	2	EA	
	INCLUDED IN ASSEMBLY HARDWARE	F5900759	SCREW, 1/4-20 X 1" PPH	4	4	4	EA
		F5901102	FLATWASHER, 1/4"	8	8	8	EA
		F5900436	NUT, ELASTIC STOP, 1/4"-20	4	4	4	EA
H2	F5991790	U-BOLT MOUNTING ASSEMBLY HARDWARE	2	2	2	EA	
	INCLUDED IN ASSEMBLY HARDWARE	F5998335	HARDWARE, HOT DIPPED GALCANIZED-HEX NUT, 1/2"	4	4	4	EA
		F5998336	HARDWARE, HOT DIPPED GALVANIZED-LOCKWASHER, 1/2"	4	4	4	EA
	F5998337	HARDWARE, HOT DIPPED GALVANIZED-FLATWASHER, 1/2"	4	4	4	EA	
J1	F5991728	TAPE, 0.75" BLACK ELECTRIC	1	1	1	EA	
J2	F5900905	TAPE, ELECTRIC, 2"	1	1	1	EA	
J3	F5900906	TAPE, FILAMENT, 1"	1	1	1	EA	
K	F4318000	CABLE, TRAY RATED 18AWG/3C	60	60	60	FT	
L	F1903130	MARKER ANGLE MOUNTING KIT (OPTIONAL)	2	3	4	FT	



### INSTALLATION NOTES

- MARKER ENCLOSURE AND U-BOLT INSTALLATION :**
  - LOCATE AND INSTALL MARKER JUNCTION BOX (B) TO ADJUSTABLE MOUNTING BRACKET (D) APPROPRIATELY.
  - TRIM U-BOLT (E) IF PERMISSIBLE, TO AVOID ANY INTERFERENCE.
- INSTALLING MARKER FIXTURE:**

PERMISSIBLE MARKER ANGLE IS UP TO 5° FROM VERTICAL WITHOUT OPTIONAL ANGLE MOUNTING KIT (L).
- INSTALLING THROUGH CORD GRIPS:**
  - INSERT CABLE (K) THROUGH CORD GRIP (C2), LEAVING ENOUGH CABLE LENGTH TO MAKE ELECTRICAL CONNECTIONS.
  - FROM THE OUTSIDE OF THE MARKER JUNCTION BOX, TIGHTEN CORD GRIP (C2) TO SECURE CABLE (K).
- INSTALLING CABLE (K) AND ELECTRICAL CONNECTIONS :**
  - DIRECT ALL CONNECTING CABLES DOWN AND AWAY FROM MARKER JUNCTION BOX, TO PREVENT MOISTURE FROM ENTERING THE BOX.
  - SECURE ALL CABLES USING THE STANDARD 2-3-4 TAPING METHOD (J2 & J3) AS DIRECTED IN EQUIPMENT MANUAL.
  - USE WIRE NUTS (G) FOR ELECTRICAL CONNECTIONS.
  - WRAP WIRE NUTS TIGHTLY WITH AT LEAST (6) LAYERS OF ELECTRICAL TAPE (J1).
  - INSTALL A DRIP LOOP, FOR CABLE, NEAR THE MARKER JUNCTION BOX AND AT EACH MARKER FIXTURE.
  - FLASHHEAD AND GROUNDING CABLED TO BE INSTALL PER MANUAL.
- TECHNICAL SUPPORT:**

FOR TECHNICAL SUPPORT CALL "NOC" (1-800-821-5825).

# AC MARKER INSTALLATION GUYED TOWER (3 MARKERS SHOWN)

UNLESS OTHERWISE SPECIFIED DIMENSIONS ARE IN INCHES TOLERANCES:		ENGINEERING - PROPRIETARY		Flash Technology
.XX DECIMAL	.XXX DECIMAL	DRAWN BY: SPS	DATE: 03/06/14	
± 0.02	± 0.010	CHECKED BY: HK	DATE: 03/06/14	TITLE
ANGLES	SURFACE QUALITY	ENGINEER: HK	DATE: 03/06/14	MKR 370 AC GUY TOWER INSTALLATION DRAWING
± 1'	✓ MAX	THIRD ANGLE PROJECTION		SIZE DWG NO: 7790112
MATERIAL: SEE BOM	FINISH: NA	APPLICATION		REVISION B
COMPANY CONFIDENTIAL: INFORMATION CONTAINED HEREIN IS CONFIDENTIAL. IT IS THE PROPERTY OF SPX CORPORATION. IT IS TO BE USED SOLELY FOR THE PURPOSE PROVIDED, AND IT IS NOT TO BE DISCLOSED TO OTHERS WITHOUT THE PRIOR WRITTEN CONSENT OF SPX CORPORATION.		SCALE: NTS	SHEET: 1 OF 1	